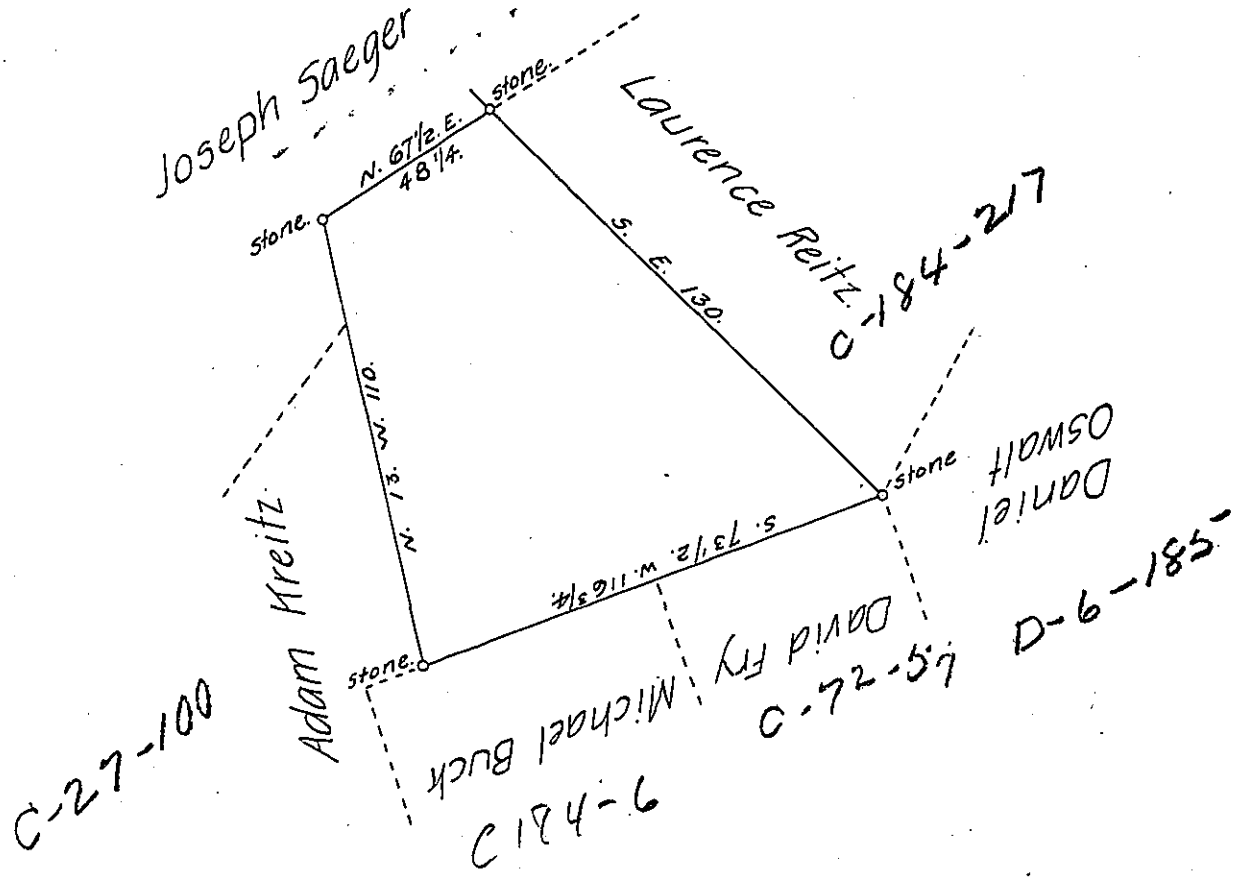


C-204-1329



By virtue of a Warrant dated the 4 January 1810. Surveyed the 15<sup>th</sup> May 1810, to Andrew Stroub, the above described tract of Land situate in Lynn township, in the County of Lehigh, containing fifty-four Acres, one hundred and forty perches & allowance of six  $\frac{1}{2}$  Cent & c<sup>a</sup>

There is a good Log house on the land in which a person resided when the Land was Surveyed & grain has been raised thereon.

Geo. Palmer, D.S.

To Richard T. Leach, Esquire,  
Surveyor General.

IN TESTIMONY that the above is a copy of the original remaining on file in the Department of Internal Affairs of Pennsylvania, made conformably to an Act of Assembly approved the 16th day of February, 1833, I have hereunto set my Hand and caused the Seal of said Department to be affixed at Harrisburg, this eleventh day of December 1906.

*George D. Palmer*  
Secretary of Internal Affairs.